



**Find the
needle in the
haystack**



Metadata-Hub

Discover the value of your data



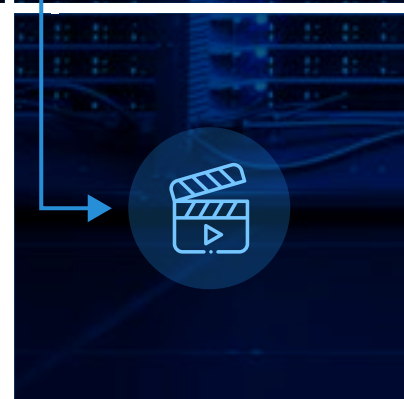
Metadata are more important than ever. More and more data is being produced and processed every day. Metadata play a crucial role managing this huge amount of data.

They make files easier to find, sort, aggregate and analyse. But how are metadata found and managed?

Metadata-Hub is the solution!

It has an intelligent file system crawler for the extraction, indexing and storage of file embedded metadata. It runs as a container instance on file servers, continuously extracts embedded metadata from files, stores it indexed in a database and makes the data available for query and processing.

Metadata-Hub helps to find and unlock the value of unstructured data!



With Metadata-Hub, it is possible to discover previously unknown information from files and make use of it. Explore, search, find, sort, filter and group files into individual filesets.

More information under: www.Metadata-Hub.com

Metadata Management is the first step towards AI



Content is King. Metadata is Queen. Without Metadata no AI.

In big-data environments, the aggregation of data plays an important role. Without metadata, however, data cannot be aggregated and analysed efficiently. Metadata can reveal patterns that are often difficult to understand through normal data collection. These patterns are the fuel for artificial intelligence. Good AI needs qualified data which are the result of good metadata management.



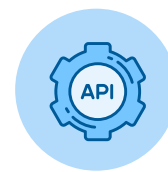
Full control via WebUI

Everything can be controlled over the browser-based web user interface. Metadata-Hub is easy to deploy and easy to use.



High-level Metadata Extraction

Metadata-Hub can handle over 30.000 metadata tags in more than 320 different file types. The trend is continuously rising. New extractors are in work.



API and Python SDK for Automation

A modern GraphQL based API is embedded and available. Third party products can also use a CLI and Python SDK to automate data processing.

